

Best Concrete
WATERPROOFING

納米科技活性矽礦物

Nanotechnology Silicon mineral

固 泥 牆

Ku-Ni-Chen



天然無機活性矽礦物水泥砂漿防水添加劑

全方位防水，抗壁癌，抑制白蟻

Ku-Ni-Chen is a nature silicon mineral waterproof additive
Using Ku-Ni-Chen additive, which has excellent waterproof,
preventing wall cancer and efflorescence functions.



壁癌的真相

why is the wall cancer occurring?

壁癌是水泥牆壁受到水氣侵蝕，當水氣進出水水泥隙縫裂縫時，發生「酸鹼中和」所產生的碳酸鹽（尤其是碳酸鈣）結晶體（亦即所看到的毛狀白色物），當其淤積牆面上造成牆面塗料壁紙起泡、鼓起、碎裂、剝落；所以水氣才是真正的肇因禍首。當牆壁在雨季漏水、滲水或建築物通風不良，環境中累積了大量的水氣；此水氣再遇上空氣中的二氧化碳或二氧化硫等酸性氣體，即形成酸性水氣，進而在水泥牆上凝結成酸性水露（亦即有如酸雨一般，PH值可達4.0之低）；此酸性水氣、酸性水露，會因為牆面防水不良或有隙裂縫而滲透到牆壁內而與水泥、砂、磚牆裡的鹼性分子（如鈉、鈣、鎂、鉀）產生中和作用，再與空氣中的二氧化碳結合成結晶體，這就是吾人所看到的白色針狀或粉末狀的壁癌了。

Humidity is the main factor that causes wall cancer. Wall Cancer is also called efflorescence. When the concrete wall is corroding by the mist, the mist will go through the wall cracks or ceramic tiles; such, resulting in bad wall appearance, wall peeling, scratching and breaking. That's called wall cancer or efflorescence

壁癌之處理

Solution for Wall Cancer

家中牆壁發生壁癌，不但破壞建材，有礙觀瞻，同時亦警告你滲漏水及室內嚴重潮濕。壁癌根本解決的方法還是要從滲漏水源頭澈底處理，將防水做好，然後再將內牆水泥打除，重新採用固泥牆添加劑加水泥粉刷，一勞永逸。

Wall cancer would damage the building material and has the visual impact with obstruction. Also, the wall cancer is warning you how humid your house is. To solve the wall cancer entirely, you need to find out where the origin damage place is, and make sure the waterproofing function has done perfectly. Then, replace Ku-Ni-Chen with concrete instead of the damage concrete.

其實如果能在房舍起造初時，多花費造價的1~2%，即早著手做好防水處理工程，則不但省錢省事，還可減少室內潮濕所帶來之各種微害。如果等到牆壁發生壁癌，再來事後補救，則可能要多花費十倍以上之代價；若再加上因滲漏水，環境潮濕所產生之黴菌健康危害風險等無形損害，則更是無法評估。

However, if we are able to spend 1~2% cost more while constructs the house; this would save more time and money after. It would need to spend about over ten times cost then do it at original for preventing the wall cancer; also, wall cancer may create fungus, that would affect our health and invisible damages or hurts.



範例 1 壁癌 Wall Cancer



範例 2 壁癌 Wall Cancer



建築物防水處理的必要性

The necessity of building water treatment

建築防水工程材料的選擇品質的好壞直接影響到建築物的使用壽命,對於混凝土和砌築結構來說防水工程是建築工程中的一個重要組成部分,建築防水技術是保證建築物和構築物不受水侵蝕,是內部空間不受危害的分項工程。

Good selection of construction waterproofing material directly reflects to the lifecycle of the building. Waterproofing job is one of the major important factors for concrete and masonry works. Good construction waterproofing technique not only guarantees building structure not damage by the water but also a protection factor for interior space

建築物滲漏問題是建築物較為突出的品質通病,也是用戶反映最為強烈的問題,許多住戶在使用之時發現屋面漏水、牆壁滲漏、粉刷層脫落現象,日復一日,房頂、內牆面會因滲漏而出現牆面大片剝落,並因長期滲漏潮濕而發黴變味直接影響住戶的身體健康。

Leakage problems are more prominent issue for a building quality; this also the most concerned problem for the users. Many occupants found roof and wall leaks, masonry layer peel off after occupied. Day after days these leaking spots produce large scale of mildew and influence the health condition of residents directly.

建築物滲漏水的存在會引起什麼樣破壞？

鋼筋銹蝕！

凍融破壞！

混凝土和砂漿的劣化！

可溶鹽結晶引起的機械破壞！

由於滲漏水而產生不良室內環境內牆出現發黴現象！

What kind of damage when the presence of the building water leakage?

Rebar corrosion!

Freeze-thaw damage!

Deterioration of concrete and mortar!

Soluble salt crystals cause mechanical damage!

Due to water leakage and adverse indoor environments

interior wall appear mildew!

完全防水功能的兩個出發點

結構本身的自防水要求,添加膨脹劑或防水劑製備具有完全防水功能的混凝土和砂漿通過使用具有自防水功能的材料進行基層找平,面層保護表面進行防水處理。

Two major factors of completely waterproof concept

For structure it waterproofed, by adding bulking or waterproofing agent or using a material with a waterproof conduct grassroots self-leveling material or the surface layer to protect the surface water treatment so let the concrete and mortar watertight.

砂漿產品中使用防水/憎水性添加劑的要求

應為親水性粉末狀產品

具有良好的拌合性能

使砂漿整體產生防水/憎水性並維持長期作用效果

對表面的粘結強度沒有負面影響

對環境無污染

Mortar requires the use of waterproof/hydrophobicity additive should be hydrophilic powder product

Good mixture capacities

Overall mortar become waterproof/hydrophobicity and maintain long-term affects

No negative impact for the bond strength of the surface

Environment friendly





大樓建築因有我而精彩！

Building construction due to my wonderful!

產品簡介

Product Introduction

固泥牆水泥砂漿防水添加劑, 是獨創革命性防水材料, 是當前國內外最新型防水材料的新技術, 原料採用矽礦物材料, 由多種原材料經特殊複雜化學反應聚合成親水性粉體材料, 屬於新型矽礦物水泥砂漿防水外加劑。

Ku-ni-chen waterproof cement additive, is unique revolutionary waterproof material, is the current domestic New technologies outside the latest waterproof material, the use of silicon raw mineral materials from a variety of materials through special aggregated into complex chemical reactions Hydrophilic powder materials, is a new type of cement mortar waterproof silicon mineral admixtures.

固泥牆水泥砂漿防水外加劑拌合水泥砂漿, 通過適當的配比, 抑制或減少砂漿孔隙, 改變砂漿孔隙形成, 增加各原材料介面間的密實性等方法, 配製成具有抗滲透, 內部具有防水能力而表面還有毛細現象及透氣性的水泥砂漿防水材料。

Ku-ni-chen cement mortar waterproofing admixtures mixing with mortar, through appropriate ratio, inhibition or reduce the porosity of mortar, mortar pore formation change, increasing the compactibility between original materials. By adding this additive, mortar becomes waterproofed from inside and capillarity, permeability from the outside surface.





品牌源於品質口碑來自真誠

Famous from the quality and reputation from the hardworking

產品特性

Product Features

固泥牆水泥砂漿防水添加劑, 的防水砂漿具有、耐酸鹼、耐腐蝕無毒、可塑性強、耐用年限長、安全環保、不龜裂、不返鹼、不分層、耐穿刺、省工省料、固泥牆水泥砂漿防水添加劑、操作簡單、縮短工期的特性, 可以用於各種防水工程中。

Ku-ni-chen waterproof cement mortar has, anti-acid and anti-alkali, corrosion-free, non-toxin, plasticity, long durable life, safety and environmental protection, no cracks, no return alkali, regardless layer, puncture resistance, provincial labor and material, Ku-ni-chen waterproof cement mortar admixtures, easy to operate, shorten the duration of the characteristics that can be used for various waterproofing projects.

- 親水性的灰色粉體材料, 與砂漿攪拌自然溶合。
- 產品PH值為9-10。
- 摻量低, 約水泥的1%~2%或乾粉水泥砂漿材料總量的0.25%~0.5%, 即可達到良好的防水, 抗滲效果。
- 無毒, 無害, 無污染。
- 符合規範要求: 《建築室內防水工程技術規範》提出, “防水砂漿添加劑於使用時宜選用易拌合、低鹼性、添加少、易均勻分佈的新型材料”。
- 其拌合新型固泥牆砂漿物防水添加劑之防水砂漿其耐久年限, 已可達到與建築物同壽命的使用要求。
- Hydrophilic gray powder additive fully mix with mortar.
- Product PH value is 9-10.
- Mix ratio is low and about 1% to 2% or 0.25% to 0.5% for the dry cement mortar. You can achieve a good waterproof, impervious effect.
- Non-toxic and Harmless and Non-polluting.
- Meet regulatory requirements: "Construction of indoor water engineering and technical specifications" suggested that "waterproof mortar admixtures should be selected using the easy to mix, low alkaline, and add a small amount, easy new material evenly distributed."
- Its mix of new Ku-ni-chen waterproofing admixture of fatty acid polymer waterproof mortar its durable life, are able to achieve the same life and building requirements.



固泥牆防水與建築同壽命

Ku-ni-chen Waterproofing is as important as building structure

用品質說話!

quality talks!

產品性能

Product Performance

- 1 粘著性: 添加固泥牆的防水砂漿, 對紅磚、水泥磚、加氣磚、砂漿、及各種混凝土等材料均具有很強的粘合力。
 - 2 防水性: 添加固泥牆之防水砂漿, 通過水泥之間強勁的物理化學作用, 在砂漿體內部產生了碳氫化合物的憎水因子抑制或減少水泥砂漿中的孔隙, 阻止了水分的滲透, 內部具有很強的防水性及透氣性。
 - 3 再塗性: 施作完成後的砂漿防水層表面, 為了具有良好再塗性及再接著性, 在配方上配製了表面具有毛細現象, 內部具有完全防水能力的砂漿防水添加劑。
 - 4 耐磨性: 固泥牆砂漿防水添加劑與砂漿水泥形成了剛性的防水層, 具有優異的耐磨性。
 - 5 防腐性: 固泥牆的砂漿防水層, 具有耐鹼性, 耐腐蝕性, 能夠防止由於氣候等因素而造成的損傷現象。
 - 6 無毒性: 固泥牆砂漿防水添加劑, 解決了因採用瀝青、焦油等溶劑型防水材料所造成的環境污染及對人體健康的危害。
 - 7 抗衝擊性: 固泥牆砂漿防水添加劑在衝擊荷重作用時, 防水砂漿毛細管結構中產生了碳氫化合物的憎水因子, 能阻止微小裂縫的產生, 具有抗衝擊力的功效。
1. Adhesion: Add Ku-ni-chen waterproof mortar on bricks, cement bricks, aerated brick, mortar, and a variety of concrete and other materials have a very strong adhesion
 2. Waterproof: Add Ku-ni-chen into a waterproof mortar, through a strong physical and chemical interactions between cement, mortar produce hydrocarbons for water suppression factor or reduce cement mortar pores, preventing the penetration of moisture, the internal waterproof and highly breathable.
 3. Re-apply: In order to have re-apply and re-bond on the finished waterproofing mortar surface so the formula become capillarity for the surface and fully waterproofed for inner core additive.
 4. Wear Resistance: Ku-ni-chen waterproof admixture with mortar form a rigid waterproof layer having excellent wear resistance.
 5. Corrosion resistance: Ku-ni-chen mortar waterproof layer, having alkali resistance, corrosion resistance, it is possible to prevent damage due to phenomena caused by the climate and other factors.
 6. non-toxic: Ku-ni-chen waterproof mortar admixtures, to solve the environmental pollution caused by the use of asphalt, tar and other solvent-based and water-proof material is caused to human health Health hazards.
 7. Impact Resistance: Ku-ni-chen waterproof mortar admixtures shock loads when the role of the capillary structure waterproof mortar hydrophobic hydrocarbons produced due to, to prevent produce tiny cracks, with shock force effect.

添加固泥牆防水劑效益比較

Add Ku-ni-chen waterproofing agent benefits compare





全方位水泥砂漿防水添加劑

All-directional concrete mortar waterproofing additive

固 泥 牆
Ku-Ni-Chen

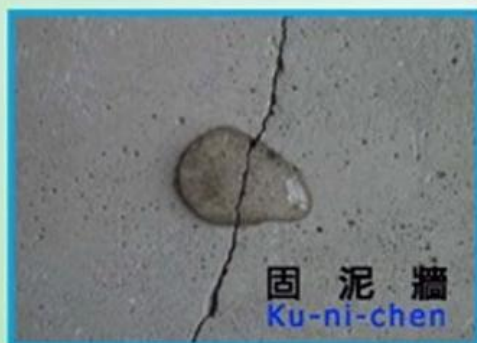
產品效益比較

Product benefit comparison



一般水泥砂漿粉刷層

Comparison of the product benefit
Normal concrete mortar painting



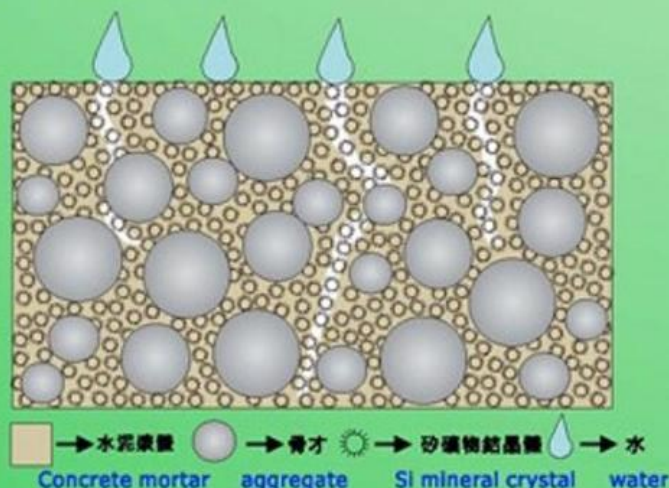
添加固泥牆砂漿粉刷層

Concrete mortar painting with
Ku-Ni-Chen additive

1. 用於外牆: 防水防止雨水侵入建物主結構, 並降低外牆白樺產生。
Apply to exterior wall: Preventing water, raining corrodes the building structure, reducing efflorescence occur
2. 用於內牆: 防潮抗壁癌, 保持內牆完全透氣乾燥。
Apply to interior wall:
Wall Cancer resisting, keep interior wall dry and ventilation entirely
3. 用於窗框嵌縫: 使用於填縫之水泥砂漿完全不吸水, 提高窗框門框的防水功效。
Apply to window frame: Improve waterproof function.

產品作用原理

The principle of the product



※當固泥牆防水劑添加量為水泥重量百分比之2%時, 每平方公尺約含有一億個不溶於水的矽礦物結晶顆粒藏於水泥漿體中形成一斥水性防水牆體達到全方位防水防潮功能。

When we add 2% cement weight of Ku-Ni-Chen waterproof additive, there will consist one hundred million Si mineral crystal in every square meter with the concrete mortar and obtain waterproof function perfect



固泥牆卓越的防水性能

Ku-ni-chen excellent waterproof performance

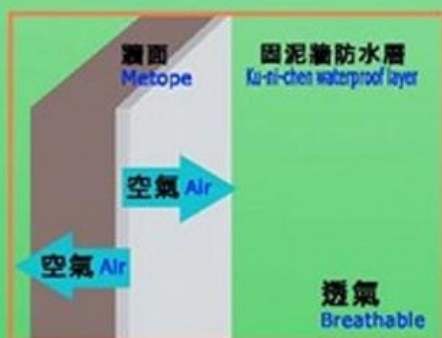
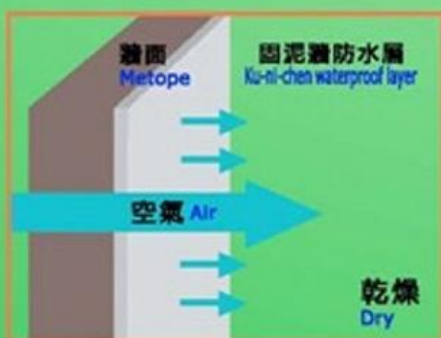
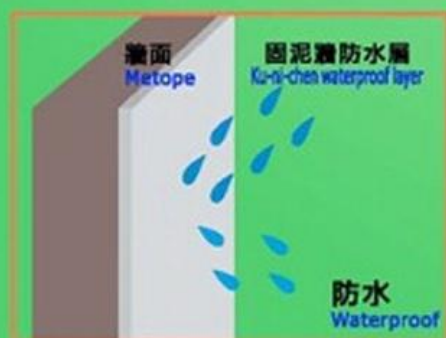
提高了建築安全性!

improved building security!

產品優勢

Advantages

1. 添加固泥牆的剛性砂漿防水技術的應用可合理的縮短工期,降低工程投入成本,改善環境,利於環保,節約社會資源,符合節約型社會發展觀。
 2. 添加固泥牆可以提高對結構自防水可能存在缺陷的重視程度,有利於前期預防工作的完善。
 3. 全方位防水,安全性高由於選擇了固泥牆的砂漿防水外加劑,使地下防水理念在室內防水工程中得到體現。
 4. 在室內外防水工程中,採用固泥牆砂漿防水外加劑施做防水,具備以下特點:
 - A. 降低成本,節省工期。
將普通砂漿摻入固泥牆砂漿防水外加劑施工使找平層與防水層同步完成,與傳統防水施工相比,僅材料費一項即可省100元/m²左右,即降低成本,又節省工期。
 - B. 剛性全方位防水,堅固耐久。
固泥牆防水砂漿,極大的降低了滲漏風險,相對於柔性防水層的易破損特點,高抗水壓,低收縮性防止空鼓開裂防水更堅固耐久。
 - C. 整體的防水層,施工厚度僅為15-20mm,節約有效空間。
 - D. 對施工環境無特殊要求,施工和使用期間無任何有害污染,安全環保。
1. Add Ku-ni-chen waterproof mortar rigid application of technology can be reasonably shorten the schedule and reduce the cost of the project investment, improve the environment, environmentally friendly, save social resources, with saving society development concept.
 2. Add Ku-ni-chen can improve and lower flawed of the structural waterproof, help improve early prevention.
 3. Comprehensive waterproof, because of choosing Ku-ni-chen waterproof mortar admixtures, so that the basement waterproofing is same as indoor waterproofing project.
 4. Indoor and outdoor waterproofing projects, using Ku-ni-chen waterproof mortar admixture have the following characteristics:
 - A. reduce costs, save time.
The incorporation Ku-ni-chen ordinary mortar admixture waterproof construction make the leveling layer and waterproof layer synchronization is complete, compared with the traditional waterproof construction, only one can save material costs 100 yuan / m² or so, that is to reduce costs, but also saves time limit.
 - B. Comprehensive rigid waterproof, strong and durable
Ku-ni-chen waterproof mortar, greatly reducing the risk of leakage, relative to the flexible waterproof layer is easily damaged characteristics, high resistance to water pressure, low shrinkage cracks to prevent water hollowing more robust and durable.
 - C. overall waterproof layer construction thickness of only 15-20mm, cost-effective space.
 - D. No special requirements for the construction environment, without any harmful pollution during construction and use, safety and environmental protection.



固泥牆用心服務 用心打造!

Ku-ni-chen We care the service and we care our product!



產品應用

Applications

1. 固泥牆砂漿防水外加劑可適用於水泥乾粉建材產品中, 它可賦於材料優良的憎水性, 大大降低材料的吸水率, 不影響材料的抗彎強度、抗壓強度, 並提高其防汙能力, 也不影響材料的再塗性及透氣性。
2. 固泥牆防水砂漿可應用於基層砂漿、面層砂漿、填縫劑、磁磚黏著劑、石膏製品及抗滲防水水泥基砂漿等。
3. 各種污水池、淨水池、食用水池、游泳池和地下工程防水。
4. 各種地下室的防水防潮、抗滲及滲漏維修等。
5. 新舊建築物及構築物(如: 地下工程、隧道、橋樑、水庫等) 防水。
6. 各種建築物的屋頂、內牆、外牆、衛生間、廚房防水。
7. 窗框坎縫勾縫或密封工程。

1. Ku-ni-chen mortar admixture can add into cement powder, which can provide material become excellent hydrophobic, greatly reducing the water absorption rate. The mortar does not affect the flexural strength, compressive strength, and improve its anti-sewage capacity, and does not affect the material properties and permeability. Reapply.
2. Ku-ni-chen waterproof mortar admixture can be applied to the base layer, the surface layer of mortar, grouts, tile adhesives, gypsum products and impervious waterproof cement-based mortar.
3. various cesspools, the net pool, eating, swimming pools and underground water.
4. various basement waterproof, permeability and leakage and maintenance.
5. new and old buildings and structures (such as: engineering, tunnels, bridges, reservoirs, etc.) and water.
6. Roof, interior, exterior, bathroom, kitchen waterproof various buildings.
7. sash sill seam sealing grout or engineering.

使用說明

Instructions

固泥牆摻量低, 添加量為水泥的1%~2%或乾粉水泥砂漿材料總量的 0.25~0.5%, (可依實際防水需求增加或減量添加)。

Ku-ni-chen low dosage, 1% to 2% of mortar, or 0.25 to 0.5% of the total dry cement mortar (as per the demand you can change the ratio)

固泥牆水泥防水砂漿 Ku-ni-chen cement mortar waterproof	拌合水 Mixing water	攪拌機具 Mixing tools
 <p>固泥牆 Ku-ni-chen cement mortar waterproof</p> <p>25KG</p> <p>1包 1 package</p>	 <p>5公斤 (約) 5 kg (approximately)</p>	 <p>攪拌10分鐘 Stirred for 10 minutes</p>

將固泥牆 (1公斤) 與水泥 (50公斤) 再加入150公斤的砂及水 (30公斤)
(水泥與砂之比例為1比3) 用水泥攪拌機攪拌均勻即可使用。

The Ku-ni-chen (1 Kg) with cement (50 kg) and add 150 kg of sand and water (30 kg)
(Ratio of cement to sand is 1 to 3) stirred with a cement mixer and ready to use.

固泥牆水泥防水砂漿摻合比例 Ku-ni-chen waterproof cement mortar blending ratio					攪拌機具 Mixing tools		
 1包 1 package	+	 1包 1 package	+	 砂150KG Sand 150KG	+	 30公斤 (約) 30kg (approximately)	 攪拌10分鐘 Stirred for 10 minutes



只為超越 拒絕平凡!

Only beyond, refuse to be ordinary!

注意事項

Precautions

※固泥牆是一種外加劑，廣泛應用於水泥砂漿製品中的添加，他可以改善砂漿防水性，更改善了水泥砂漿的和易性，降低分層，保水性好大大改善砂漿易泌水的情況，克服了砂漿容易發生乾縮的裂縫。

※添加固泥牆防水外加劑的水泥砂漿其工作性良好，直接影響施工人員操作和施工品質。

※摻入固泥牆防水外加劑後能顯著改善建築砂漿的工作性能，便於施工操作，提高工作效率。

※固泥牆在商品化砂漿可添加的砂漿種類有：普通砂漿、砌築砂漿、抹面砂漿、保溫砂漿、粘結砂漿、介面砂漿、抗裂砂漿、石灰砂漿、混合砂漿等等，水泥砂漿製品中的廣泛應用。

※固泥牆對傳統現地攪拌施工工藝的革命性改變，摻入固泥牆防水外加劑後能顯著改善建築砂漿的工作性能，便於施工操作，提高工作效率和施工品質，有利於新技術。

※固泥牆防水外加劑對傳統現地攪拌施工要求。

1. 請務必依照固泥牆防水外加劑使用比例，確實攪拌均勻方可施工。

2. 一般砂漿標準設計比例為1:3，用途最廣性能亦佳，若因現地限制及施工習性，而選擇其他比例，水泥砂漿的性能會有所改變，請特別注意與可適用的施作部位，以避免影響施工品質及防水效果。

3. 為確保產品效果及品質，施工厚度至少15mm以上。

※使用固泥牆之水泥砂漿請勿再添加其他添加劑，如石灰膏、稠化粉、引氣劑、砂漿王等。

※水泥需使用(525)標號以上正牌的水泥，禁止使用複合水泥。

※ Ku-ni-chen is an additive, widely used in cement mortar products in addition, he can improve the mortar waterproof, more improved workability of mortar and lower layers, greatly improving water retention and easy bleeding of mortar situation, to overcome the mortar cracks prone to shrinkage.

※ add Ku-ni-chen waterproof cement mortar admixtures their work is good, directly affect the operation and construction quality construction personnel.

※ After incorporation Ku-ni-chen waterproofing admixtures can significantly improve the performance of building mortar, to facilitate construction operations, improve work efficiency.

※ Ku-ni-chen mortar can be added in the commercialization of mortar types: ordinary mortar, mortar, plastering mortar, insulation mortar, adhesive mortar, mortar interface, cracking mortar, lime mortar, mixed mortar, etc., cement mortar products The widely used.

※ Ku-ni-chen now stirring the construction process revolutionized the traditional, after the incorporation of solid walls waterproofing admixtures can significantly improve performance building mortar, to facilitate construction operations, improve efficiency and quality of construction, in favor of new technologies.

※ Ku-ni-chen waterproofing admixture now stirring traditional construction requirements.

1. Make sure accordance ku ni chen use waterproof admixture proportions, indeed stir before construction.

2. General mortar standard design ratio of 1: 3, the most widely used performance is also good, if the issues are now limiting habits and construction, and the choice of other ratios, cement mortar performance will change, please pay special attention to the applicable Oxfam site, in order to avoid the impact of construction quality and waterproof effect.

3. In order to ensure product performance and quality construction thickness of at least 15mm or more.

※ use of cement mortar Ku-ni-chen Do not add other additives such as lime paste, thickening powder, air-entraining agent, mortar Wang.

※ cement need to use (525) label than genuine cement, prohibit the use of composite cement.